

# NICR

NCDEX Group Company

Weekly Monsoon Report  
August 22, 2022



# Monsoon 2022

According to the India Meteorological Department, the depression over Northeast Madhya Pradesh moved westwards on 22nd August, 2022 over Central parts Madhya Pradesh and adjoining south Uttar Pradesh near latitude 24.4 °N and longitude 78.8 °E, about 60 km north of Sagar (Madhya Pradesh), 70 km west-northwest of Damoh (Madhya Pradesh) and 115 km south-southeast of Jhansi (Uttar Pradesh). It would continue to move west north westwards across northwest Madhya Pradesh and weaken into a well-marked Low Pressure Area. The monsoon trough at mean sea level now runs from Amritsar, Karnal, Delhi, centre of Depression over Central parts Madhya Pradesh and adjoining south Uttar Pradesh, Sidhi, Daltonganj, Jamshedpur, Kharagpur, Digha and thence east-southeastwards to northeast Bay of Bengal.

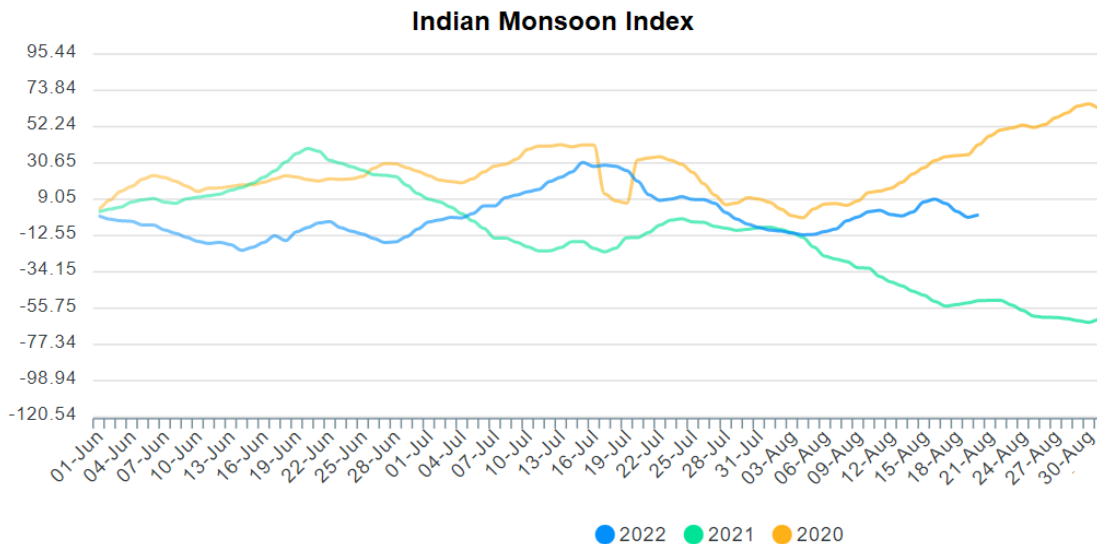
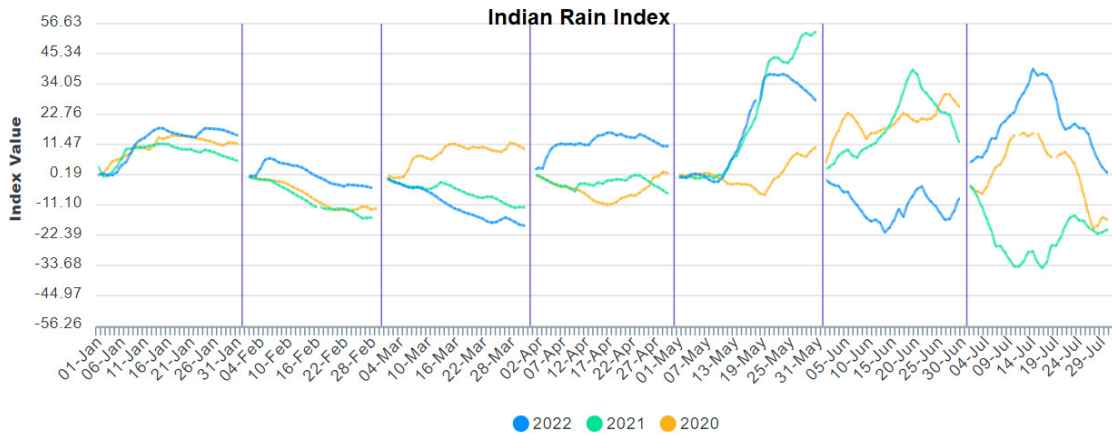
## Outlook for Rainfall

- According to IMD, fairly widespread/widespread light/moderate rainfall with isolated heavy to very heavy rainfall with extremely heavy falls very likely over West Madhya Pradesh and East Rajasthan on 22nd August, 2022.
- Fairly widespread/widespread light/moderate rainfall with isolated heavy to very heavy falls and thunderstorm/lightning very likely over ghat areas of Madhya Maharashtra on 22nd, East Rajasthan, West Rajasthan and northern parts of Gujarat Region on 23rd August, 2022.
- Fairly widespread/widespread light/moderate rainfall with isolated heavy falls and thunderstorm/lightning very likely over Konkan & Goa, East Madhya Pradesh & northern parts of Gujarat Region on 22nd, West Rajasthan on 22nd & 24th; Gangetic West Bengal, ghat area of Madhya Maharashtra & Odisha on 23rd and Saurashtra & Kutch on 24th August, 2022.
- Fairly widespread/widespread light/moderate rainfall with isolated heavy falls and thunderstorm/lightning very likely over south Haryana on 22nd, Himachal Pradesh on 23rd & 24th and Uttarakhand on 24th August, 2022.
- Fairly widespread light/moderate rainfall with isolated heavy falls and thunderstorm/lightning very likely over Assam & Meghalaya and Nagaland, Manipur, Mizoram & Tripura on 22nd & 23rd August, 2022.
- Fairly widespread to widespread light/moderate rainfall with isolated heavy falls and thunderstorm/lightning very likely over Coastal Andhra Pradesh & Yanam on 26th; Coastal Karnataka on 22nd, 24th, 25th & 26th; South Interior Karnataka, Kerala & Mahe and Tamilnadu, Puducherry & Karaikal during 23rd -26th August, 2022.
- Widespread light/moderate rainfall with isolated heavy falls and thunderstorm/lightning very likely over Andaman & Nicobar Islands during 22nd August, 2022.

## NCDEX Weather Indices

Weather indices are based on the occurrence of a weather event. The underlying assumption is that certain weather events such as flood / drought are correlated with crop losses and are therefore income risks. The key advantages to this kind of indices are that the trigger events e.g. deficit rainfall can be independently verified and therefore not subject to the possibilities of manipulation. These indices capture the deviation in rainfall from normal value.

NCDEX Rainfall Indices, India's first nation-wide rainfall performance indicators. Indian Monsoon Index tracks the monsoon for the period of 1st June to 30th September every year and Indian Rain Index which tracks the month wise performance of the rainfall across the country. Indian Monsoon Index are calculated for the monsoon period i.e. from 1st June to 30th September every year. On 1st of June every year the index will be reset to zero.



Source: NCDEX

## 5 Day Rainfall Forecast (MORNING)

22-August-2022

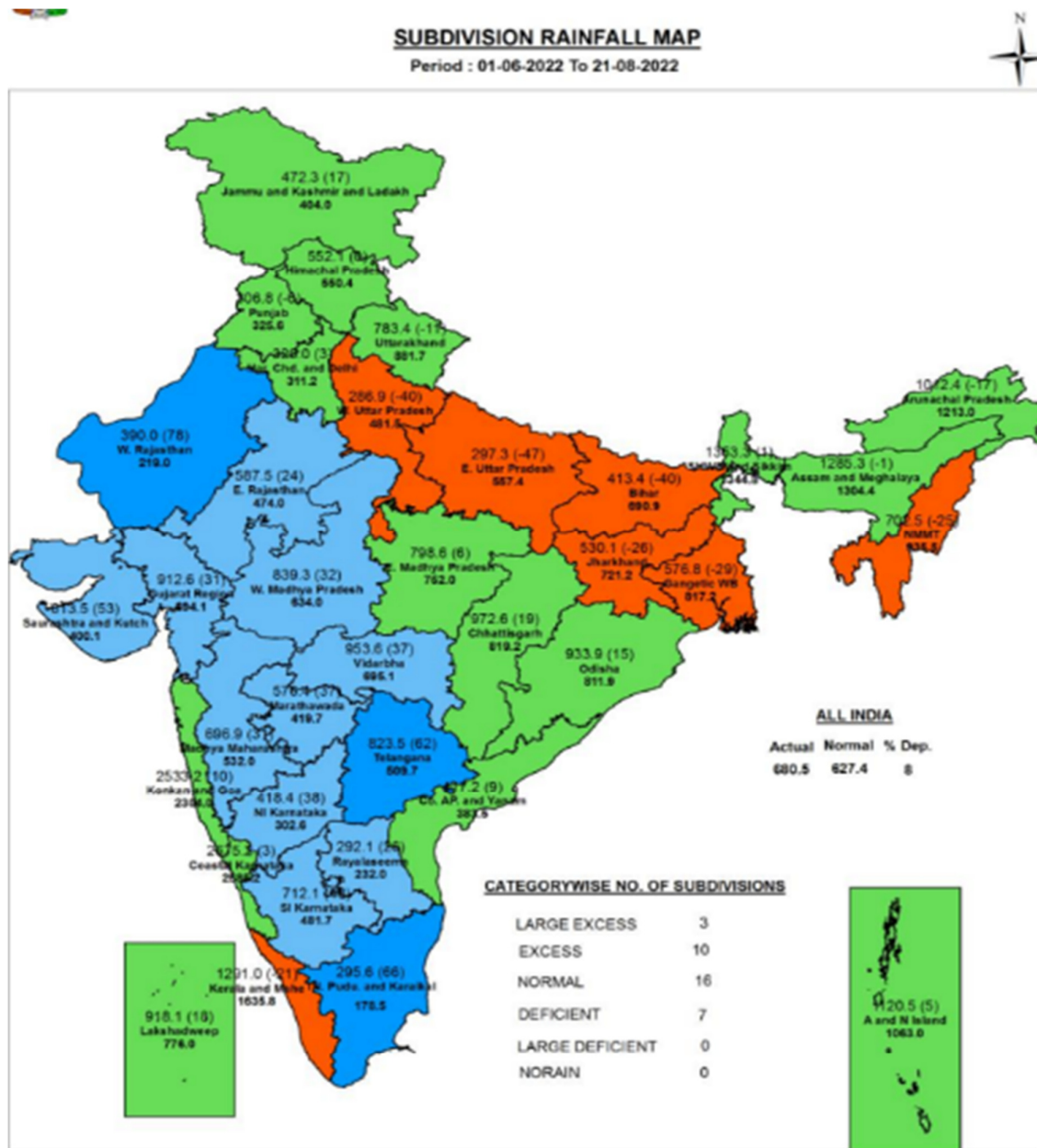
Met-Sub-Division	22-Aug Today	23Aug Tue	24Aug Wed	25Aug Thu	26Aug Fri
1. Andaman & Nicobar Islands	WS	WS	FWS	FWS	FWS
2. Arunachal Pradesh	SCT	SCT	SCT	SCT	FWS
3. Assam & Meghalaya	FWS	FWS	FWS	FWS	FWS
4. N. M. M. & T.	FWS	FWS	FWS	FWS	FWS
5. S.H. West Bengal & Sikkim	SCT	FWS	SCT	SCT	SCT
6. Gangetic West Bengal	SCT	FWS	FWS	SCT	SCT
7. Odisha	ISOL	FWS	FWS	FWS	FWS
8. Jharkhand	ISOL	FWS	FWS	FWS	SCT
9. Bihar	ISOL	SCT	SCT	SCT	SCT
10. East Uttar Pradesh	SCT	ISOL	SCT	FWS	SCT
11. West Uttar Pradesh	SCT	ISOL	ISOL	SCT	SCT
12. Uttarakhand	SCT	SCT	FWS	FWS	FWS
13. Haryana, Chd & Delhi	SCT	ISOL	SCT	SCT	SCT
14. Punjab	ISOL	ISOL	SCT	SCT	SCT
15. Himachal Pradesh	FWS	WS	WS	WS	WS
16. J & K and Ladakh	SCT	SCT	FWS	FWS	FWS
17. West Rajsthan	FWS	WS	FWS	ISOL	ISOL
18. East Rajasthan	WS	WS	FWS	ISOL	ISOL
19. West Madhya Pradesh	WS	FWS	ISOL	ISOL	ISOL
20. East Madhya Pradesh	FWS	ISOL	SCT	FWS	FWS
21. Gujarat Region	FWS	WS	FWS	SCT	SCT
22. Saurashtra & Kutch	SCT	SCT	FWS	SCT	SCT
23. Konkan & Goa	WS	WS	WS	FWS	FWS
24. Madhya Maharashtra	FWS	SCT	SCT	SCT	SCT
25. Marathawada	ISOL	ISOL	ISOL	ISOL	ISOL
26. Vidharbha	SCT	ISOL	SCT	SCT	SCT
27. Chhattisgarh	SCT	ISOL	FWS	FWS	FWS
28. Coastal A. P. & Yanam	ISOL	SCT	SCT	SCT	SCT
29. Telangana	ISOL	ISOL	SCT	SCT	SCT
30. Rayalaseema	ISOL	ISOL	SCT	SCT	SCT
31. T.N.,Puducherry & Karaikal	ISOL	SCT	FWS	FWS	FWS
32. Coastal Karnataka	WS	WS	WS	WS	WS
33. North Interior Karnataka	SCT	SCT	SCT	SCT	SCT
34. South Interior Karnataka	SCT	FWS	FWS	FWS	FWS
35. Kerala & Mahe	FWS	FWS	WS	WS	WS
36. Lakshadweep	FWS	FWS	FWS	FWS	FWS

### % Station Reporting Rainfall

% Stations	Category	% Stations	Category
76-100	Widespread (WS/ Most Places)	26-50	Scattered (SCT/ A Few Places)
51-75	Fairly Widespread (FWS/ Many Places)	1-25	Isolated (ISOL)
No Rain	Dry		

Source: IMD, New Delhi

## Subdivision wise Cumulative Rainfall (as on 21 August 2022)



**Legend**

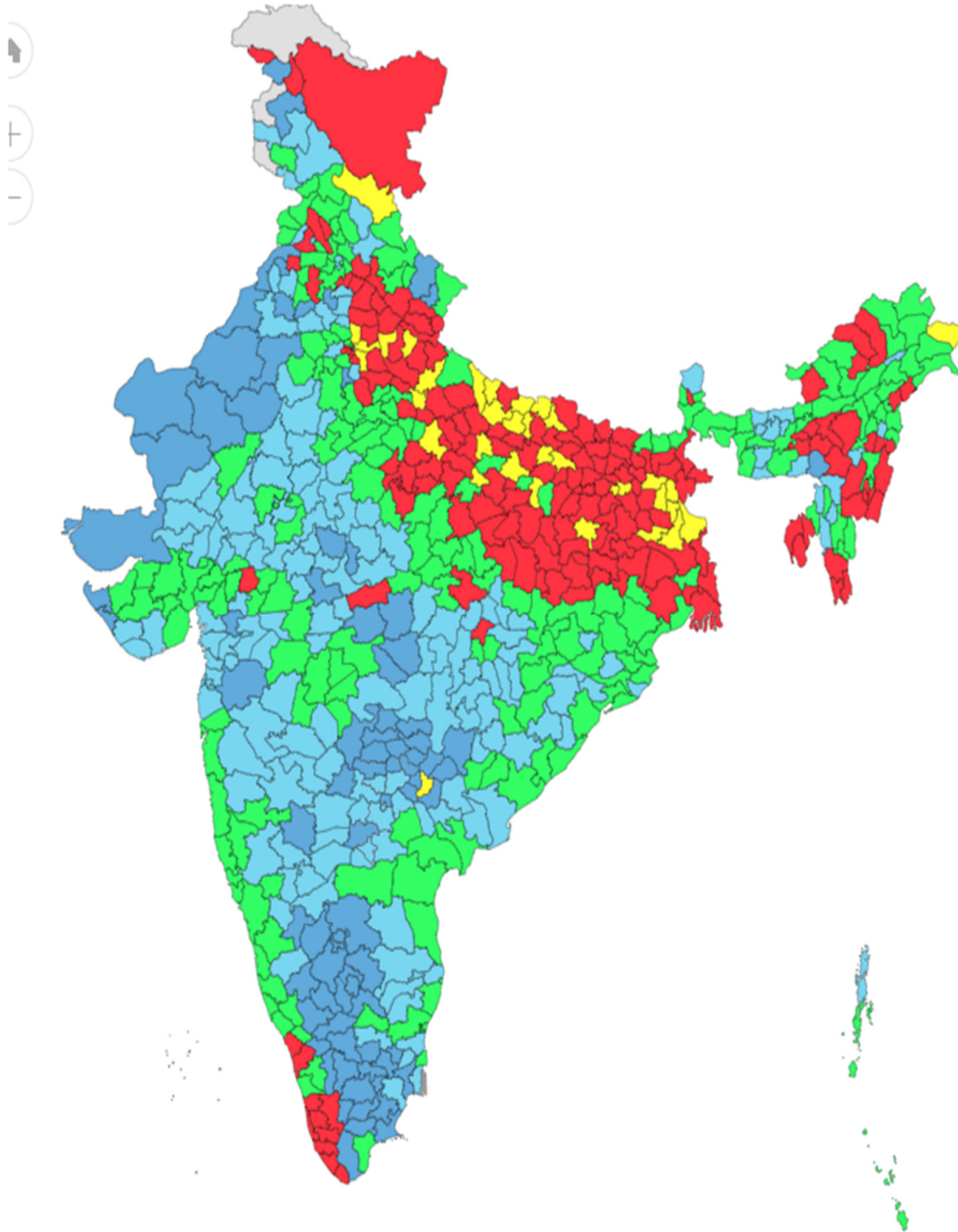
Large Excess [80% or more] Excess [20% to 80%] Normal [-19% to 19%] Deficient [-59% to -20%] Large Deficient [-89% to -60%] No Rain [-100%] No Data

**NOTES :**

- a) Rainfall figures are based on operation data.
- b) Small figures indicate actual rainfall (mm), while bold figures indicate Normal rainfall (mm).
- c) Percentage Departures of rainfall are shown in brackets.

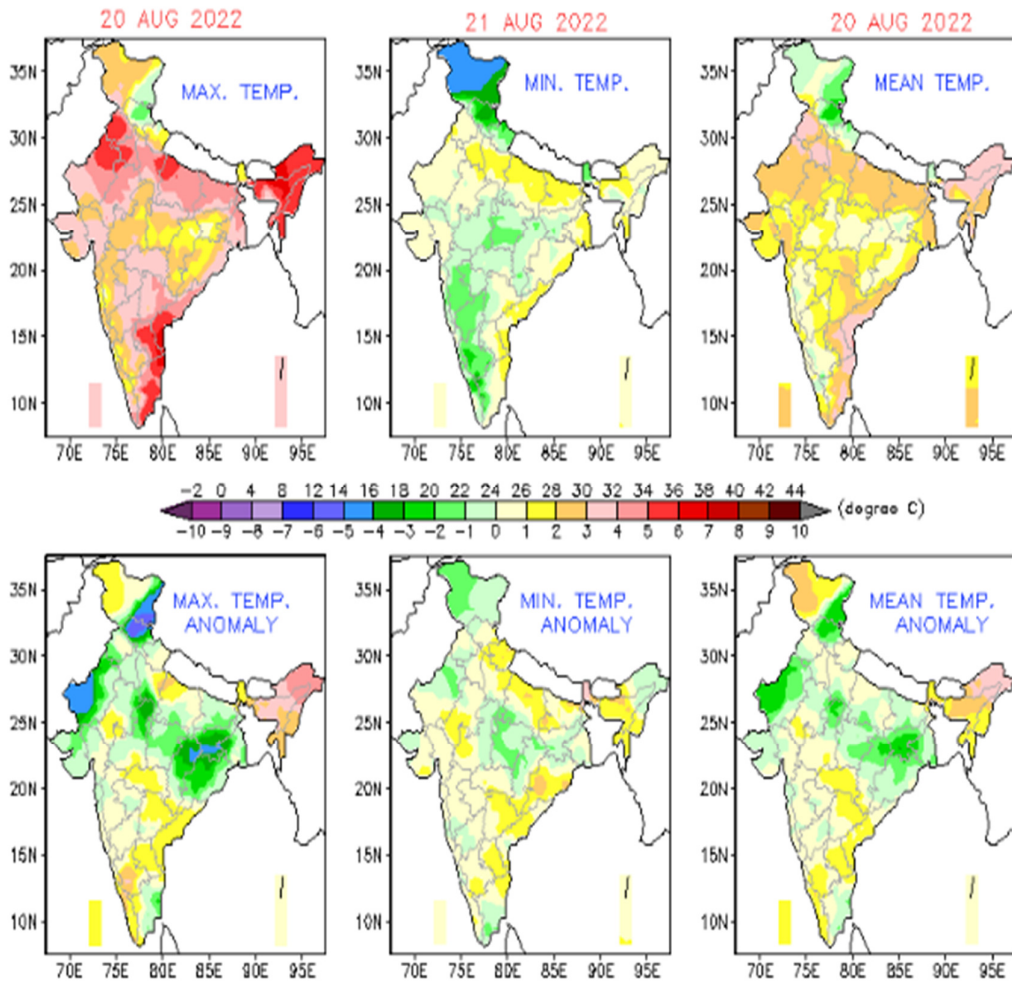
Source: IMD, New Delhi

## District wise Cumulative Rainfall (as on 22 August 2022)



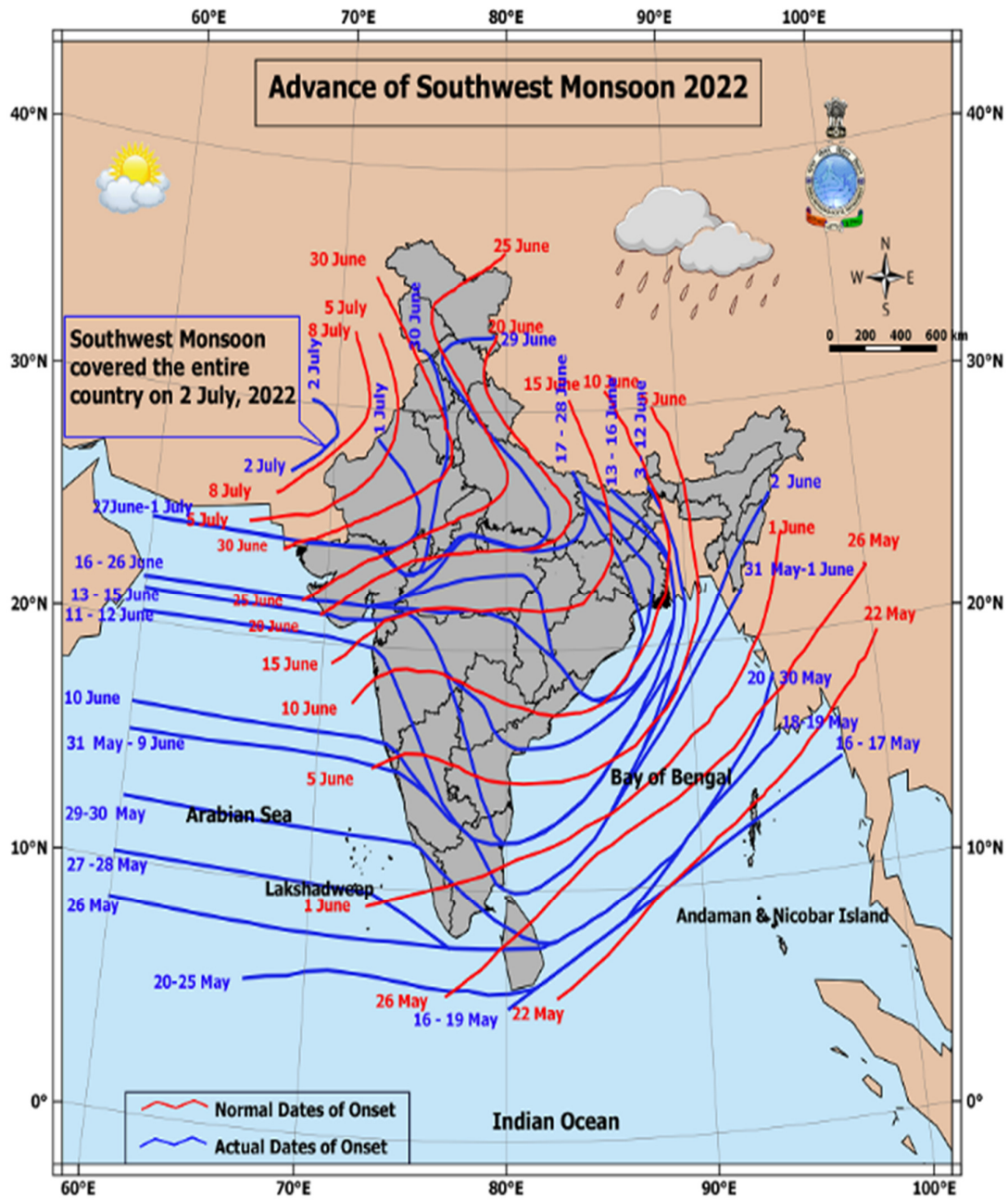
Source: IMD, New Delhi

## Actual Temperature



Source: IMD, New Delhi

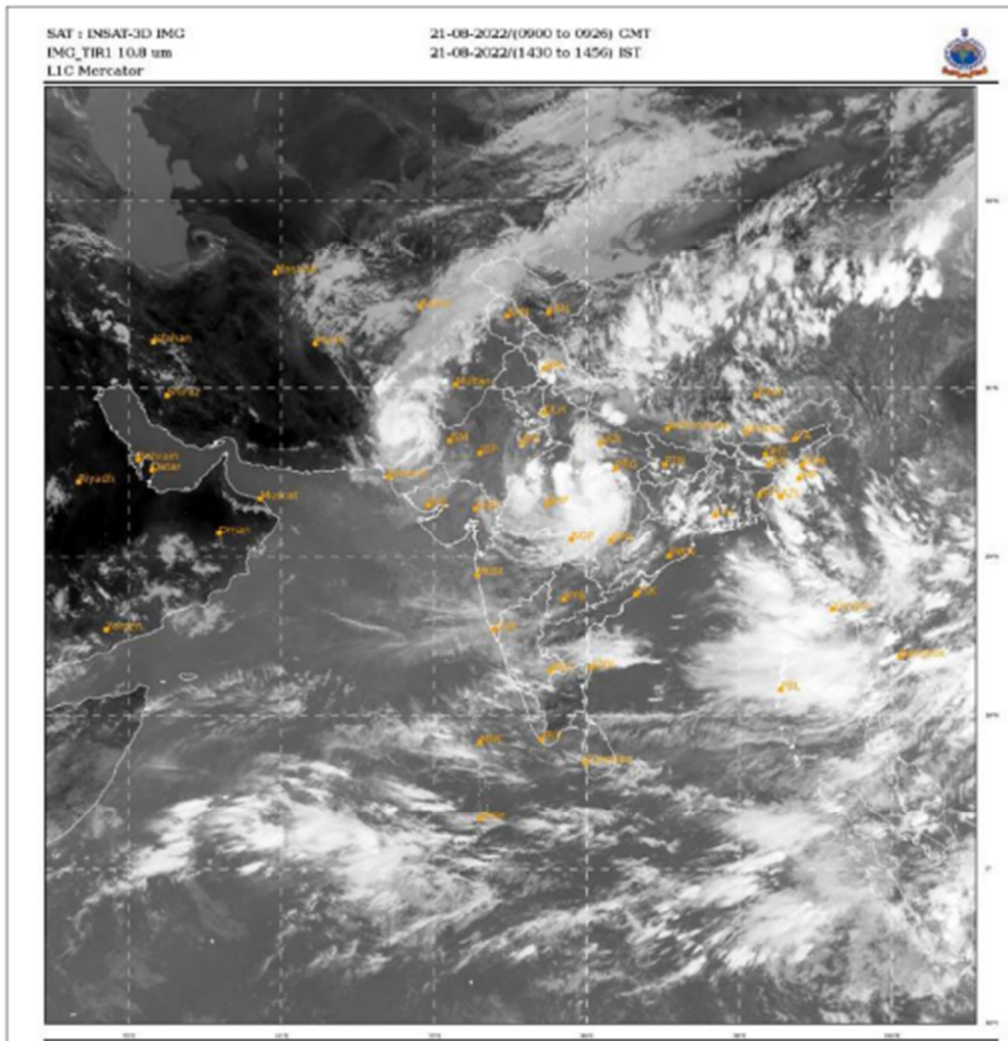
## Advancement of Monsoon 2022



Source: IMD, New Delhi



## Cloud Status



Source: IMD, New Delhi

## Kharif Crop Sowing Progress

As per the preliminary reports published by the Ministry of Agriculture and Farmer Welfare (MoAFW), the total sown area as on 19 August, total acreage is down by 5.34% in pulses, up by 3.2% in coarse cereals, and down by 0.77% in oilseeds and up by 5.98% for cotton as compared to the sown area seen during same period of last year.

As on 19 August 2022, status of crops sowing:

(in Lakh hectare)

S.NO.	CROPS	Area Sown	Area Sown	Net Change	% change
		2022	2021	2021	2021
1	Total Pulses	125.57	132.65	-7.08	-5.34
	(i) Arhar	43.38	46.74	-3.36	-7.19
	(ii) Kulthi	0.21	0.43	-0.23	-52.25
	(iii) Urad	35.21	37.10	-1.89	-5.10
	(iv) Moong	32.40	33.96	-1.56	-4.59
	(v) Other Pulses	14.37	14.41	-0.04	-0.28
2	Total Coarse Cereals	172.78	167.42	5.36	3.20
	(i) Jowar	13.37	13.87	-0.05	-3.61
	(ii) Bajra	69.49	62.71	6.78	10.81
	(iii) Ragi	4.79	7.15	-2.36	-33
	(iv) Maize	80.19	79.00	1.18	1.50
	(v) Small Millets	4.94	4.69	0.26	5.46
3	Total Oilseeds	184.42	185.85	-1.43	-0.77
	(i) Groundnut	44.32	47.95	-3.63	-7.58
	(ii) Sunflower	1.84	1.43	0.40	28.23
	(iii) Sesamum	12.24	12.38	-0.14	-1.13
	(iv) Niger	0.36	0.29	0.07	23.83
	(v) Castor	6.01	4.65	1.36	29.38
	(vi) Soyabean	119.54	119.04	0.49	0.42
	(vii) Other Oilseeds	0.12	0.10	0.01	13.97
4	Total Jute and Mesta	7.00	7.00	0.00	0.00
5	Cotton	123.09	116.15	6.94	5.98

Source: Ministry of Agriculture

For in-depth customized research reports on agri-commodities please connect with us at: [helpdesk.nicr@ncdex.com](mailto:helpdesk.nicr@ncdex.com)

---

Learn more about NCDEX Institute of Commodity Markets and Research (NICR) at:  
<http://www.nicrindia.in>

**Address for Communication:**

Avanta Business Center, 12th floor, Ambadeep Building, 14, KG Marg, New Delhi – 110001, India.

Free No: 1800 26 62339

Email: [admindelhi.nicr@ncdex.com](mailto:admindelhi.nicr@ncdex.com) ; [helpdesk.nicr@ncdex.com](mailto:helpdesk.nicr@ncdex.com)

**Registered Office:**

Akruti Corporate Park, 1st Floor, Near G.E.Garden, L.B.S. Marg, Kanjurmarg (West),  
Mumbai - 400 078. India

Tel: +91-22-66406789; Fax: +91-22-66406899; Toll Free No: 1800 26 62339

Email: [askus@ncdex.com](mailto:askus@ncdex.com)

**Corporate Identity No.** (CIN) of NICR is U74900MH2007NPLC174229.

## Disclaimer

---

This Report is for general information of the recipients. The views and opinions expressed in this document may or may not match the views of the reader. It does not constitute a personal recommendation or take into account the particular investment objectives, financial situations, or other needs of the reader. This document is not intended to be and must not be taken as the basis for any investment decision. It should be noted that the information contained herein is from publicly available data or other

sources believed to be reliable. We are not soliciting any action based upon this material. Neither NICR, nor any person connected with it, accepts any liability arising from the use of this document.